

Analysis of 3D Shapes (IN2238)

Frank R. Schmidt
Matthias Vestner

Summer Semester 2016

11. Geodesics and Curvature

Covariant Derivative

Christoffel Symbols

Given a coordinate map $x: U \rightarrow M$ of the n -dimensional manifold $M \subset \mathbb{R}^{n+1}$, the canonical Riemannian metric is given as

$$g: U \rightarrow \mathbb{R}^{n \times n} \quad g_{ij}(u) = \langle \partial_i x(u), \partial_j x(u) \rangle$$

While the first derivatives $\partial_i x(u)$ lie in the n -dimensional vector space $T_{x(u)}M$, the second derivatives might contain a normal component, i.e.,

$$\partial_{ij} x(u) = \sum_{k=1}^n \Gamma_{ij}^k(u) \partial_k x(u) + \alpha_{ij}(u) N(u)$$

The n^3 scalar functions $\Gamma_{ij}^k: U \rightarrow \mathbb{R}$ are called **Christoffel symbols**. They are symmetric in i and j , i.e., $\Gamma_{ij}^k = \Gamma_{ji}^k$. (Why?)

Christoffel Symbols and Metric

Using $\partial_i g_{j\ell}(u) = \langle \partial_i \partial_j x(u), \partial_\ell x(u) \rangle + \langle \partial_i \partial_\ell x(u), \partial_j x(u) \rangle$, we obtain

$$\begin{aligned} \tilde{\Gamma}_{\ell ij}(u) &:= \frac{1}{2} [\partial_i g_{j\ell}(u) + \partial_j g_{\ell i}(u) - \partial_\ell g_{ij}(u)] \\ &= \frac{1}{2} [\langle \partial_i \partial_j x(u), \partial_\ell x(u) \rangle + \langle \partial_i \partial_\ell x(u), \partial_j x(u) \rangle + \langle \partial_j \partial_\ell x(u), \partial_i x(u) \rangle + \\ &\quad \langle \partial_j \partial_i x(u), \partial_\ell x(u) \rangle - \langle \partial_\ell \partial_i x(u), \partial_j x(u) \rangle - \langle \partial_j \partial_\ell x(u), \partial_i x(u) \rangle] \\ &= \langle \partial_{ij} x(u), \partial_\ell x(u) \rangle = \sum_{k=1}^n \Gamma_{ij}^k(u) g_{k\ell}(u) \end{aligned}$$

If we use the notation $g^{ij}(u) := (g(u)^{-1})_{ij}$, we obtain

$$\sum_{\ell=1}^n g^{k\ell}(u) \tilde{\Gamma}_{\ell ij}(u) = \sum_{k'=1}^n \sum_{\ell=1}^n g^{k\ell}(u) g_{\ell k'}(u) \Gamma_{ij}^{k'}(u) = \Gamma_{ij}^k(u)$$

Christoffel Symbols are Intrinsic

In summary, we have

$$\partial_{ij} x = \sum_{k=1}^n \Gamma_{ij}^k \partial_k x + \alpha_{ij} N$$

with the **intrinsic** Christoffel symbols

$$\Gamma_{ij}^k = \sum_{\ell=1}^n \frac{1}{2} g^{k\ell} [\partial_i g_{j\ell} + \partial_j g_{\ell i} - \partial_\ell g_{ij}]$$

The expression $\sum_{k=1}^n \Gamma_{ij}^k \partial_k x$ can also be seen as an intrinsic derivative of the vector field $\partial_j x$ in the direction of $\partial_i x$.

This derivative is called **covariant derivative**.

Example: Sphere

Given the coordinate map

$$\begin{aligned} x: \left] -\frac{\pi}{3}, \frac{\pi}{3} \right[\times \left] -\frac{\pi}{3}, \frac{\pi}{3} \right[&\rightarrow \mathbb{S}^2 \\ (\alpha_1, \alpha_2) &\mapsto \begin{pmatrix} \cos(\alpha_1) \cos(\alpha_2) \\ \sin(\alpha_1) \cos(\alpha_2) \\ \sin(\alpha_2) \end{pmatrix} \end{aligned}$$

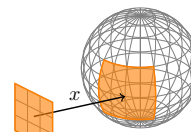
we obtain the Riemannian metric

$$g(\alpha_1, \alpha_2) = \begin{pmatrix} \cos^2(\alpha_2) & 0 \\ 0 & 1 \end{pmatrix}$$

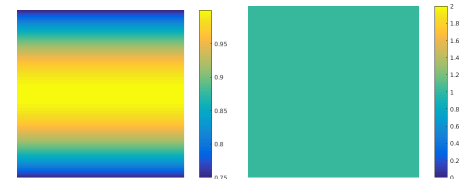
and the Christoffel symbols

$$\Gamma^1(\alpha_1, \alpha_2) = -\frac{\sin(2\alpha_2)}{2 \cos(\alpha_2)^2} \begin{pmatrix} 0 & 1 \\ 1 & 0 \end{pmatrix} \quad \Gamma^2(\alpha_1, \alpha_2) = \frac{\sin(2\alpha_2)}{2} \begin{pmatrix} 1 & 0 \\ 0 & 0 \end{pmatrix}$$

Example: Christoffel Symbols

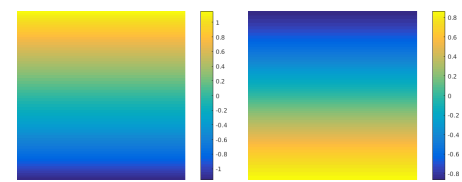


Parametrization



g_{11}

g_{22}

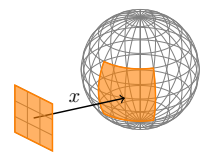


$\Gamma^1_{12} = \Gamma^1_{21}$

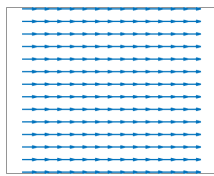
Γ^2_{11}

Example: Covariant Derivative

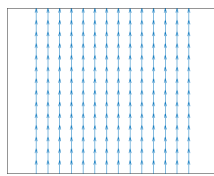
Covariant Derivative Geodesics Second Fundamental Form



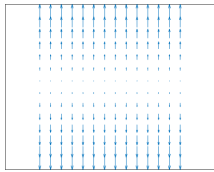
Parametrization



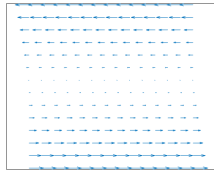
"∂1x"



"∂2x"



"∇∂1x∂1x"



"∇∂1x∂2x" = "∇∂2x∂1x"



"∇∂2x∂2x"

Covariant Derivative

Covariant Derivative Geodesics Second Fundamental Form

Given a coordinate map $x: U \rightarrow M$ of the n -dimensional manifold $M \subset \mathbb{R}^{n+1}$, and two vector fields Y and Z represented as ($p = x(u)$)

$$Y(p) = \sum_{i=1}^n y_i(u) \partial_i x(u) \quad Z(p) = \sum_{j=1}^n z_j(u) \partial_j x(u),$$

the **covariant derivative** $\nabla_Z Y$ is a vector field that can be represented as

$$[\nabla_{\partial_j x} \partial_i x](p) = \sum_{k=1}^n \Gamma_{ij}^k(u) \partial_k x(u)$$

$$[\nabla_{\partial_j x} Y](p) = \sum_{i=1}^n y_i(u) \nabla_{\partial_j x} \partial_i x(p) + \partial_j y_i(u) \partial_i x(u) \quad (\text{product rule in } Y)$$

$$[\nabla_Z Y](p) = \sum_{j=1}^n z_j(u) \cdot \nabla_{\partial_j x} Y(p) \quad (\text{linearity in } Z)$$

Extrinsic Formulation

Covariant Derivative Geodesics Second Fundamental Form

$\nabla_Z Y$ can be formulated in a simpler manner if Y and Z can be extended to the ambient space \mathbb{R}^{n+1} of M . To this end let

$$\tilde{Y}, \tilde{Z}: \mathbb{R}^{n+1} \rightarrow \mathbb{R}^{n+1}$$

with $\tilde{Y}|_M = Y$ and $\tilde{Z}|_M = Z$.

Then, we have for every $p \in M$

$$\nabla_Z Y(p) = \pi_{T_p M} (D\tilde{Y}(p) \cdot \tilde{Z}(p)),$$

where

$$\pi_{T_p M}: \mathbb{R}^{n+1} \rightarrow T_p M$$

is the orthogonal projection of the ambient space \mathbb{R}^{n+1} onto $T_p M$.

Geodesics

Shortest Path in Local Coordinates

Covariant Derivative Geodesics Second Fundamental Form

Given a coordinate map $x: U \rightarrow M$ of the n -dimensional manifold M , we like to find the shortest path $\gamma: [0, 1] \rightarrow U$ that connects two points $u_0, u_1 \in U$.

The length of γ is induced by the Riemannian metric $g: U \rightarrow \mathbb{R}^{n \times n}$ via

$$\text{length}(\gamma) = \int_0^1 \langle \dot{\gamma}(t), g(\gamma(t)) \cdot \dot{\gamma}(t) \rangle^{\frac{1}{2}} dt$$

It is often easier to consider the following energy function instead

$$E(\gamma) = \left[\int_0^1 \langle \dot{\gamma}(t), g(\gamma(t)) \cdot \dot{\gamma}(t) \rangle dt \right]^{\frac{1}{2}}$$

Using the Cauchy-Schwarz inequality, we obtain

$$\text{length}(\gamma) \leq E(\gamma)$$

with equality iff $\|\dot{\gamma}\|_g \equiv \text{const}$, i.e., γ is uniformly parametrized.

Geodesics

Covariant Derivative Geodesics Second Fundamental Form

Let us select the two minimizers $\gamma^* \in \text{argmin length}(\cdot)$ and $\hat{\gamma} \in \text{argmin } E(\cdot)$. Further we assume that $\tilde{\gamma}^*$ is a uniform re-parametrization of γ^* .

Then we have

$$\text{length}(\gamma^*) = \text{length}(\tilde{\gamma}^*) = E(\tilde{\gamma}^*) \geq E(\hat{\gamma}) \geq \text{length}(\hat{\gamma}) \geq \text{length}(\gamma^*).$$

Therefore, we know

Every minimizer of E minimizes length [length($\hat{\gamma}$) = length(γ^*)]

The minimum of E is the minimal length [length($\hat{\gamma}$) = $E(\hat{\gamma})$]

The minimizer of E is uniformly parametrized [length($\hat{\gamma}$) = $E(\hat{\gamma})$]

Minimizing E provides us with a uniformly parametrized shortest path between two points. Every local minimum of E is called **geodesic**.

Geodesic Equation

Covariant Derivative Geodesics Second Fundamental Form

Given two points $u_0, u_1 \in U$, a geodesic $\gamma = (\gamma_1, \dots, \gamma_n): [0, 1] \rightarrow U$ that connects these points minimizes

$$E(\gamma_1, \dots, \gamma_n) := \int_0^1 \sum_{i,j=1}^n g_{ij}(\gamma(t)) \cdot \dot{\gamma}^i(t) \dot{\gamma}^j(t) dt$$

The **Euler-Lagrange equation** is

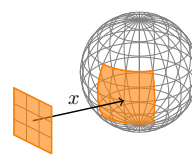
$$0 = \frac{\partial E}{\partial \gamma_k} = \sum_{i,j=1}^n \partial_k g_{ij}(\gamma(t)) \dot{\gamma}^i(t) \dot{\gamma}^j(t) - \frac{d}{dt} \left[2 \sum_{i=1}^n g_{ik}(\gamma(t)) \dot{\gamma}^i(t) \right]$$

$$\ddot{\gamma}^k = - \langle \dot{\gamma}, \Gamma^k \dot{\gamma} \rangle$$

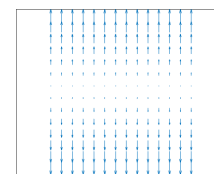
and can therefore be presented with respect to the Christoffel symbols.

Example: Geodesics

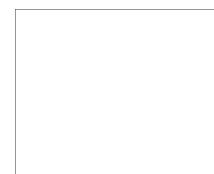
Covariant Derivative Geodesics Second Fundamental Form



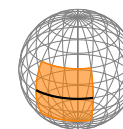
Parametrization



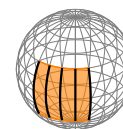
"∇∂1x∂1x"



"∇∂2x∂2x"



Equator



Meridians

Covariant Derivative along Curves

Covariant Derivative Geodesics Second Fundamental Form

Given a curve $\gamma: (0, L) \rightarrow U$ and a vector field X along the curve $c = x \circ \gamma$, we would like to define

$$\frac{\nabla}{dt} X := \nabla_{\dot{c}} X$$

To this end let $Y = \sum_{i=1}^n y^i \partial_i x$ be a vector field on M that coincides along c with X . Further let $Z = \sum_{i=1}^n z^i \partial_i x$ be a vector field that coincides along c with \dot{c} . Then we have ($p = x(u) = c(\tau)$)

$$\nabla_Z Y(p) = \sum_{k=1}^n \left[\frac{d}{dt} \left(y^k \circ \gamma(t) \right) \Big|_{t=\tau} + \sum_{i,j=1}^n y^i(u) \Gamma_{ij}^k(u) z^j(u) \right] \partial_k x(u)$$

If we restrict this vector field to a vector field along the curve, it only depends on X and c , but not on the extension of Y and Z . Thus, $\frac{\nabla}{dt}$ is well defined.

Geodesic Equation of the Covariant Derivative

Covariant Derivative Geodesics Second Fundamental Form

Given a geodesic $c: (0, 1) \rightarrow M$, we have for $\dot{c} = \sum_{i=1}^n \dot{\gamma}^i \partial_i x$

$$\begin{aligned} \frac{\nabla}{dt} \dot{c} &= \sum_{k=1}^n \left[\dot{\gamma}^k + \sum_{i,j=1}^n \dot{\gamma}^i \Gamma_{ij}^k \dot{\gamma}^j \right] \partial_k x \\ &= \sum_{k=1}^n \left[\dot{\gamma}^k + \langle \dot{\gamma}, \Gamma^k \dot{\gamma} \rangle \right] \partial_k x = 0 \end{aligned}$$

The geodesic equation can therefore be written as

$$\frac{\nabla}{dt} \dot{c} = 0$$

Since $\frac{\nabla}{dt} \dot{c}$ measures how different a curve c is from a geodesic we can use it to define the **geodesic curvature** of a curve.

Geodesic curvature

Covariant Derivative Geodesics Second Fundamental Form

Given a curve $c: (0, L) \rightarrow \mathbb{R}^2$ parametrized by arc-length ($\|\dot{c}\| \equiv 1$), the curvature $\kappa(t)$ at $c(t)$ can be computed via

$$\kappa(t) = \frac{\det(\dot{c}(t), \ddot{c}(t))}{\|\dot{c}(t)\|^3} = \det(\dot{c}(t), \ddot{c}(t))$$

Given a curve $c: (0, L) \rightarrow M$ in the 2D manifold M that is parametrized by arc-length, we can compute the **geodesic curvature** $\kappa_g(t)$ by replacing \ddot{c} with $\frac{\nabla}{dt} \dot{c}$ and obtain

$$\kappa_g(t) = \det \left(\dot{c}(t), \frac{\nabla}{dt} \dot{c}(t) \right)$$

The geodesic curvature is 0 for geodesics and can therefore be understood as an intrinsic reformulation of the classical curvature of curves.

Second Fundamental Form

Gauss Map

Covariant Derivative Geodesics Second Fundamental Form

Given a 2D manifold $M \subset \mathbb{R}^3$, we call a smooth mapping

$$N: M \rightarrow \mathbb{S}^2 \quad \forall p \in M: N(p) \perp T_p M$$

its **Gauss map**. For every 3D shape there exists such a mapping. (Why?)

If $x: U \rightarrow M$ is a coordinate mapping, we can always define a local Gauss map via

$$N: M \rightarrow \mathbb{S}^2$$

$$p \mapsto \frac{\partial_1 x(u) \times \partial_2 x(u)}{\|\partial_1 x(u) \times \partial_2 x(u)\|} \quad \text{for } u = x^{-1}(p)$$

If $M = f^{-1}(c)$ is given implicitly via a function $f: \mathbb{R}^3 \rightarrow \mathbb{R}$, the Gauss map is given via $N(p) = \frac{\nabla f(p)}{\|\nabla f(p)\|}$.

Shape Operator

Covariant Derivative Geodesics Second Fundamental Form

Given a 2D manifold $M \subset \mathbb{R}^3$ together with its Gauss map $N: M \rightarrow \mathbb{S}^2$, we call its differential the **shape operator** or **Weingarten mapping** S

$$S_p: T_p M \rightarrow T_{N(p)} \mathbb{S}^2$$

$$v \mapsto DN(p)[v]$$

Since $T_{N(p)} \mathbb{S}^2 = N(p)^\perp = T_p M$, $S_p: T_p M \rightarrow T_p M$ is an endomorphism.

If we choose a basis of $T_p M$, we would obtain a 2×2 matrix, but this matrix would depend on the chosen basis. Nonetheless, the eigenvalues of these matrices would remain the same.

The goal is to show that S_p can be put in diagonal form and that both eigenvalues are real.

Self-Adjointness of the Shape Operator

Covariant Derivative Geodesics Second Fundamental Form

We know (Linear Algebra) that self-adjoint endomorphisms are diagonalizable with real eigenvalues. Therefore, we have to prove that

$$\langle v_1, S_p(v_2) \rangle = \langle S_p(v_1), v_2 \rangle \quad \text{for all } v_1, v_2 \in T_p M$$

If v_1 and v_2 are co-linear this is obvious. If they are not co-linear, one can find a local coordinate map $x: U \rightarrow M$ with $x(0) = p$ and $v_i = \partial_i x(0)$.

Using $\langle N \circ x(u), \partial_i x(u) \rangle \equiv 0$ leads to

$$0 = \partial_1 \langle N \circ x(u), \partial_2 x(u) \rangle \Big|_{u=0} = \langle S_p(v_1), v_2 \rangle + \langle N(p), \partial_{12} x(0) \rangle$$

$$0 = \partial_2 \langle N \circ x(u), \partial_1 x(u) \rangle \Big|_{u=0} = \langle S_p(v_2), v_1 \rangle + \langle N(p), \partial_{21} x(0) \rangle$$

which proves the self-adjointness of the shape operator.

Principal Curvatures

Covariant Derivative Geodesics Second Fundamental Form

The two eigenvalues $\kappa_1(p)$ and $\kappa_2(p)$ of S_p are called **principal curvatures** and corresponding eigenvectors $v_1(p)$ and $v_2(p)$ are called **principal curvature directions**.

Note that $\kappa_g(p)$ along the geodesic c_i corresponding to $v_i(p)$ is 0 and the curvature of this curve coincides with $\kappa_i(p)$. In that sense, we can think of the principal curvatures as natural generalizations of the planar curvature.

We can derive two other curvatures from the principal curvatures:

$$H(p) := \frac{\kappa_1(p) + \kappa_2(p)}{2} = \frac{1}{2} \text{tr}(\mathcal{M}) \quad (\text{mean curvature})$$

$$K(p) := \kappa_1(p) \cdot \kappa_2(p) = \det(\mathcal{M}) \quad (\text{Gauss curvature})$$

given a representing matrix \mathcal{M} of S_p .

Given the shape operator $S_p: T_pM \rightarrow T_pM$, we can define the **Second Fundamental Form**

$$\mathbb{I}: T_pM \times T_pM \rightarrow \mathbb{R} \quad (v_1, v_2) \mapsto \langle S_p v_1, v_2 \rangle$$

This means, we have

$$\partial_{ij}x = \sum_{k=1}^n \Gamma_{ij}^k \partial_k x - \mathbb{I}(\partial_i x, \partial_j x) \cdot N$$

and the second fundamental form can be computed via

$$\mathbb{I}(\partial_i x, \partial_j x) = -\langle \partial_{ij}x, N \rangle.$$

Any coordinate map $x: U \rightarrow M$ provides for a base $\{\partial_1 x(u), \dots, \partial_n x(u)\}$ of T_pM for $p = x(u)$. In this base, the shape operator S_p can be written as

$$S_p(\partial_j x(u)) = \sum_{i=1}^n \mathcal{M}_j^i \partial_i x(u)$$

This means, we have

$$-\mathbb{I}(\partial_j x, \partial_k x) = \langle S_p(\partial_j x), \partial_k x \rangle = \sum_{i=1}^n \langle \mathcal{M}_j^i \partial_i x, \partial_k x \rangle = \sum_{i=1}^n g_{ki} \mathcal{M}_j^i$$

In other words the representing matrix \mathcal{M} of S_p satisfies the **Weingarten equations**

$$\mathcal{M} = -g^{-1} \cdot \mathbb{I}$$